

POSTGRADUATE INSTITUTE OF MEDICINE
UNIVERSITY OF COLOMBO

MD (ORTHOPAEDIC SURGERY) EXAMINATION – FEBRUARY 2025

Date:- 24th February 2025

Time:- 2.00 p.m. – 4.00 p.m.

PAPER I

Answer all four (04) questions.

Answer each question in a separate book.

1. A 72-year-old man on long-term anticoagulation for atrial fibrillation presents to the A&E following a fall at home. He has significant pain and deformity in his right hip and is unable to bear weight. Initial assessment shows him to be haemodynamically stable, with a GCS of 15 and no other injuries. Radiography confirms an intracapsular fracture of the right femoral neck. He had been active and independent prior to the fall.

1.1. Describe your management with an emphasis on perioperative care, providing justification for your decisions. (65 marks)

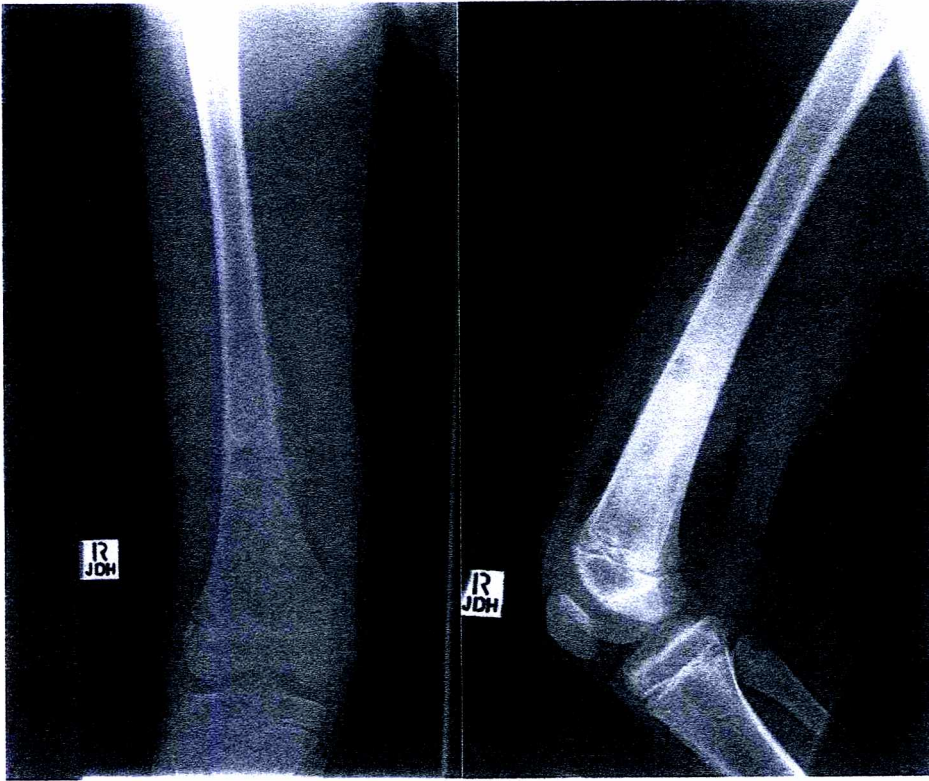
48 hours after surgery he develops acute breathlessness. His heart rate is 136 beats/minute, respiratory rate is 28/ minute and SpO₂ is 90%.

1.2. Outline his initial assessment and management based on the likely causes for his sudden deterioration. (35 marks)

Contd.../2-

2. A 13-year-old previously healthy boy is struck in the right lower thigh by a cricket ball. He complains of pain in his thigh over the next two days.

The following plain X-rays are performed.



- 2.1. Describe in detail the X-ray findings including differential diagnosis. (30 marks)
- 2.2. Outline the principles of management of this condition including definitive treatment. (70 marks)

Contd..../3-

3. A 35-year-old plumber has fallen from a height and presents with an isolated injury to elbow.



- 3.1. Describe the X-ray findings and the diagnosis. (20 marks)
- 3.2. Outline the management of this injury. (60 marks)
- 3.3. Discuss the long term complications. (20 marks)

4. A 20-year-old man was referred to your orthopaedic clinic by a general practitioner for his deformed feet.

Weight bearing views of medial and posterior aspects of his feet are shown below.



- 4.1. Describe the deformities that you see in his right foot. (20 marks)
- 4.2. Enumerate the conditions that could give rise to the above clinical picture. (20 marks)
- 4.3. Describe how you would clinically evaluate, investigate and manage this patient. (60 marks)